



THE  
SPRAY NOZZLE  
PEOPLE

# WTZ

Right Angle  
Full Cone Nozzle  
Clog Resistant

## FULL CONE

### DESIGN FEATURES

- ✓ No internal parts, clog-resistant
- ✓ Uniform distribution
- ✓ Male and female connections
- ✓ Large free passage

### SPRAY CHARACTERISTICS

- ✓ Spray pattern: Full Cone
- ✓ Spray angle: 90° and 110°
- ✓ Flow rates: 0.50 to 223 l/min



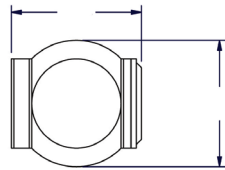
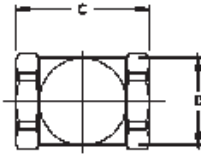
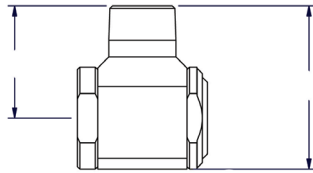
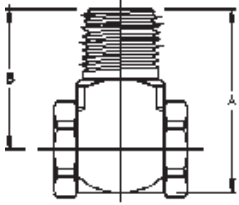
The WTZ is a tangential whirl full cone nozzle. It has a large free passage and produces an even distribution of spray with a moderate level of atomisation. Right angle spray nozzles can be used in a variety of situations where head space is limited. Common applications for this nozzle include:

Pasteurisation tunnels  
Packed Bed Distribution  
Foam control  
And more.

**CALL NOW : +44 (0) 1273 400092**

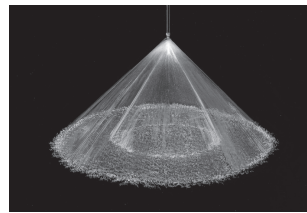
[www.spray-nozzle.co.uk](http://www.spray-nozzle.co.uk)

The Go-to People for spray nozzle solutions



Metal

3/4" and 1"



Full cone 90°



Full cone 120°

## WTZ Flow Rates and Dimensions

Full Cone, 90° and 110° Spray Angles, 1/4", 3/8", 1/2", 3/4", and 1" Pipe Size, BSP or NPT

Male or female pipe size	Nozzle No	K Factor	Litres per minute at bar							Orifice Dia	Dimensions (mm) metal only			
			0.5 bar	1 bar	2 bar	3 bar	5 bar	7 bar	10 bar		A	B	C	D
1/4"	WTZ 50	1.13	0.8	1.13	1.6	1.96	2.53	2.99	3.58	1.9	33	25	20	16
	WTZ 56	1.27	0.9	1.27	1.8	2.2	2.84	3.36	4.02	2				
	WTZ 62	1.41	1	1.41	2	2.45	3.16	3.74	4.47	2.1				
	WTZ 77	1.77	1.25	1.77	2.5	3.06	3.95	4.67	5.59	2.3				
	WTZ 98	2.23	1.58	2.23	3.15	3.86	4.98	5.9	7.05	2.6				
	WTZ 120	2.83	2	2.83	4	4.9	6.33	7.48	8.95	3				
	WTZ 150	3.53	2.5	3.53	5	6.12	7.9	9.35	11.2	3.3				
3/8"	WTZ 170	3.96	2.8	3.96	5.6	6.86	8.86	10.5	12.5	3.5	38	28	30	19
	WTZ 200	4.46	3.15	4.46	6.3	7.72	10	11.8	14.1	3.7				
	WTZ 250	5.66	4	5.66	8	9.8	12.7	15	17.9	4.15				
	WTZ 280	6.36	4.5	6.36	9	11	14.2	16.8	20.1	4.4				
	WTZ 310	7.07	5	7.07	10	12.3	15.8	18.7	22.4	4.65				
	WTZ 390	8.84	6.25	8.84	12.5	15.3	19.8	23.4	28	5.2				
	WTZ 500	11.3	8	11.3	16	19.6	25.3	29.9	35.8	5.8				
1/2"	WTZ 620	14.1	10	14.1	20	24.5	31.6	37.4	44.7	7.3	47	35	38	25
	WTZ 780	17.7	12.5	17.7	25	30.6	39.5	46.8	55.9	8				
	WTZ 980	22.3	15.8	22.3	31.5	38.6	49.8	58.9	70.4	8.7				
	WTZ 1120**	25.5	18.1	25.5	36.1	44.2	57.1	67.5	80.7	9.87				
	WTZ 1280**	29.2	20.6	29.2	41.3	50.5	65.2	77.2	92.2	10.7				
3/4"*	WTZ 1440**	32.8	23.2	32.8	46.4	56.8	73.4	86.8	103.8	9.93	76	51	51	51
	WTZ 1200	27.3	19.3	27.4	38.7	47.4	61.2	72.4	86.5	8.51				
	WTZ 1500	34.2	24.2	34.2	48.3	59.2	76.4	90.4	108	10.5				
1"*	WTZ 1900	43.3	30.6	43.3	61.2	75	96.8	115	137	11.9	81	56	65	63
	WTZ 2200	50.1	35.5	50.1	70.9	86.8	112	133	159	12.7				
	WTZ 3100	70.6	50	70.7	99.9	122	158	187	223	13.5				