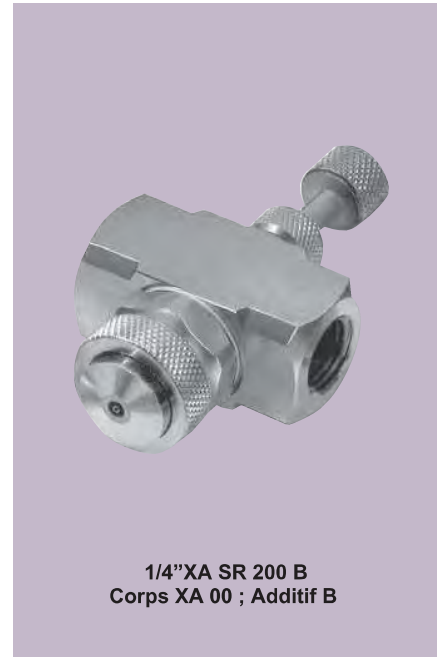
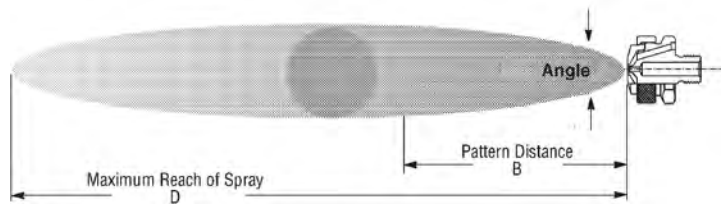


# XASR

## Siphon - Mélange externe - Jet rond

### CARACTERISTIQUES

- Le plus bas débit de la gamme
- Mélange externe
- Très fine atomisation
- Jet cône plein
- Angle de pulvérisation étroit (entre 12° et 22°)



1/4" XA SR 200 B  
Corps XA 00 ; Additif B

AIR ATOMIZING

### XA SR - Débits et dimensions

Siphon, mélange externe, jet rond, raccords 1/8" et 1/4", BSP ou NPT

Raccord	Réf.	buses liquide & Air	AIR ATOMISE		Capacité liquide en l/h								Dimensions de la pulvérisation avec 200mm d'aspiration			
			Air (bar)	(Nm <sup>3</sup> /h)	Distance gravité			Hauteur d'aspiration					Air (bar)	Angle (deg.)	B (mm)	D (m)
					450 mm	300 mm	150 mm	100 mm	200 mm	300 mm	600 mm	900 mm				
1/8 ou 1/4	SR 050	Fluid Cap FC7 & Air Cap AC 1201	0.7	0.66	1.5	1.3	1.1	0.9	0.7	0.5	0.6		0.7	18	280	1.8
			1.5	1.02	1.8	1.7	1.5	1.3	1.2	1.1	0.6		1.5	18	280	1.9
			3.0	1.68	2.1	1.9	1.7	1.5	1.4	1.3	1.1	0.8	3.0	18	300	2.3
			4.0	2.16	2.2	2.0	1.8	1.6	1.5	1.4	1.2	0.9	4.0	18	360	2.6
	SR 150	Fluid Cap FC4 & Air Cap AC1201	0.7	0.78	24	2.1	1.7	1.5	1.2	0.8	0.9		0.7	18	300	2.1
			1.5	1.20	2.8	2.6	2.4	2.1	1.9	1.6	1.7		1.5	18	330	2.3
			3.0	1.92	3.4	3.1	2.9	2.8	2.6	2.4	2.4	1.1	3.0	18	380	2.6
			4.0	2.46	3.7	3.4	3.3	3.1	2.9	2.7	2.1	1.5	4.0	19	430	3.0
	SR 200	Fluid Cap FC4 & Air Cap AC1202	0.7	1.38	2.5	2.3	2.0	1.6	1.4	1.1	0.9		0.7	18	300	2.4
			1.5	2.16	2.9	2.8	2.5	2.2	2.0	1.7	1.7		1.5	18	330	2.7
			3.0	3.48	3.4	3.3	3.2	2.9	2.8	2.5	1.9	1.2	3.0	19	380	3.4
			4.0	4.44	3.7	3.6	3.5	3.4	3.3	3.0	2.5	2.0	4.0	20	430	4.0
SR 250	Fluid Cap FC3 & Air Cap AC1202	0.7	1.14	4.5	4.0	3.4	2.1	1.8	1.4			0.7	21	380	3.0	
		1.5	1.86	5.3	4.9	4.4	3.5	2.9	2.7	1.8		1.5	21	410	3.4	
		3.0	3.00	6.0	5.6	5.0	4.4	4.0	3.4	2.4	1.2	3.0	21	460	4.0	
		4.0	3.90	5.7	5.4	5.0	4.2	3.9	3.5	2.8	1.9	4.0	22	510	4.6	
SR 400	Fluid Cap FC1 & Air Cap AC 1204	1.5	3.48	22	19.9	16.3	12.3	10.5	8.3	2.8		1.5	17	460	3.7	
		3.0	5.28	25	23	19.5	16.7	14.2	11.5	6.4	2.8	3.0	18	510	4.3	
		4.0	6.66	26	24	21	18.4	15.7	12.9	7.9	4.5	4.0	18	530	4.9	
		5.6	8.82	26	24	22	19.7	17	14.6	9.8	6.1	5.6	19	580	5.5	
SR 450	Fluid Cap FC5 & Air Cap AC 1205	2.0	8.64				27	22	16.8			2.0	20	510	6.7	
		3.0	11.4				30	26	21			3.0	20	530	7.0	
		4.0	14.4		43	40	31	28	23	11.0		4.0	21	580	7.6	
		5.6	18.9	44	42	39	31	28	24	16.7	8.3	5.6	22	630	8.2	

Matériaux standards: Laiton nickelé, aciers inoxydables 303 et 316

TO ORDER: specify pipe size, body style, spray set-up #, hardware and mounting assemblies, and material. See page 78.