

HydroWhirl® Poseidon®



Nettoyage des reservoirs - Buse en PTFE

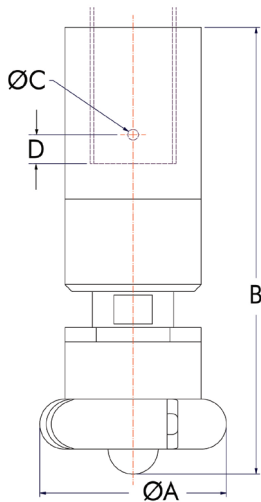
CARACTERISTIQUES

- Nettoie plus rapidement avec moins d'eau et moins de pression qu'une buse statique.
- Realisation en PTFE:
 - Resistante aux agressions chimiques
 - Resistante a la corrosion
- Trois types de connexions possibles: Clips pour tube interieur ou exterior, clips DIN. Possibilite de raccords taraudes sur demande.
- Materiaux approuves FDA pour une utilisation NEP.

PARAMETRES DU JET

- Rotation lente pour un recirage efficace
- Pulverisation omnidirectionnelle sur 360°
- Debits: de 58,3 a 333 l/min
- Ouverture minimum dans le reservoir: Petite: 75mm, Large: 83mm

Nettoyage des reservoirs



| Type de raccord | References Buse | | | | | | | | | | | |
|--------------------------------|-----------------|------|------|------------------|------|--------|------------------|------|------|--------------------------------------|--------|--------|
| | HWP-10 | | | HWP-23 HWP-28 | | | HWP-32 HWP-37 | | | HWP-48 HWP-55 HWP-65 HWP-73 | | |
| FNPT/BSP | 1/4" | 3/8" | 1/2" | 3/8" | 1/2" | 3/4" | 1/2" | 3/4" | 1" | 1" | 1-1/4" | 1-1/2" |
| Pipe Clip-On | | | | | | | X | | | | | |
| Dim F (mm) | 13.7 | 17.3 | | | 21.3 | | 21.3 | 26.7 | 33.5 | 33.5 | 42.2 | 48.3 |
| Tube Clip-On | 1/2" | 3/4" | 3/4" | 1" | 1" | 1-1/4" | | | | | 1-3/4" | |
| Dim F (mm) | 12.7 | 19.1 | | | 25.4 | | 25.4 | 31.8 | 38.1 | | | 44.5 |
| DIN Clip On (DIN 11866 Part A) | DN10 | DN15 | | | DN20 | | | DN25 | | | DN40 | |
| Dim F (mm) | 13 | 19 | | 19 | 23 | | 23 | 29 | | | 41 | |

HydroWhirl Poseidon Debit et dimensions

| Reference Buse | Angle Jet | Liters Par Minute @ Bar | | | | | | Dimensions (mm) | | | | Masse (g) | Couverture de las buses @ 2.8 bar |
|----------------|-----------|-------------------------|------|------|------|------|------|-----------------|-------|------|-----|-----------|-----------------------------------|
| | | 0.5 | 1 | 1.5 | 2 | 3 | 4 | A | B | D | E | | |
| HWP-10 | 360° | 14.3 | 20.3 | 24.9 | 28.8 | 35.4 | 40.9 | 42.7 | 100.1 | 12.7 | 2.4 | 85.0 | 2.7 |
| HWP-23 | | 30.3 | 43.1 | 52.9 | 61.2 | 75.2 | 87.0 | 49.5 | 104.6 | 12.7 | 4.1 | 113 | 3.4 |
| HWP-28 | | 34.6 | 49.0 | 60.0 | 69.3 | 84.9 | 98.0 | | | | | | 4.3 |
| HWP-32 | | 37.5 | 53.8 | 66.5 | 77.2 | 95.4 | 111 | | | | | | 4.3 |
| HWP-37 | | 48.5 | 69.2 | 85.2 | 98.7 | 122 | 141 | 76.2 | 162.6 | 12.7 | 4.8 | 595 | 4.9 |
| HWP-48 | | 66.0 | 94.0 | 116 | 134 | 165 | 191 | | | | | | 7.3 |
| HWP-55 | | 75.4 | 107 | 132 | 153 | 188 | 218 | | | | | | 7.6 |
| HWP-65 | | 98.7 | 140 | 171 | 198 | 243 | 281 | 83.8 | 184.4 | 12.7 | 4.8 | 822 | |
| HWP-73 | 108 | 153 | 187 | 216 | 265 | 307 | | | | | | | |

Standard Materials: Nozzle: PTFE; Retaining Clip: 316 stainless steel

*Flowrates lower with threaded connection. Contact BETE for more information.

TO ORDER: specify pipe size, connection type, nozzle number, spray angle, and material.